



Franklin

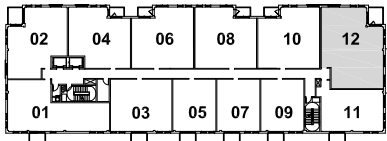
1255 & 1355 West Roosevelt Road
Elevator Residence
212, 312, 412

Three Bedrooms
Two Baths
1,428 Square Feet

NOTE:
THIS DRAWING IS FURNISHED FOR INFORMATIONAL
PURPOSES ONLY. DIMENSION AND FIELD
CONDITIONS MAY VARY AND ARE SUBJECT TO
CHANGE WITHOUT NOTICE. 10/06.

LIVING AREA CEILING HEIGHTS ARE NOMINALLY
9'-0".

LOCATION AND SIZES OF CABINETS, APPLIANCES
AND FIXTURES ARE APPROXIMATE AND MAY VARY.

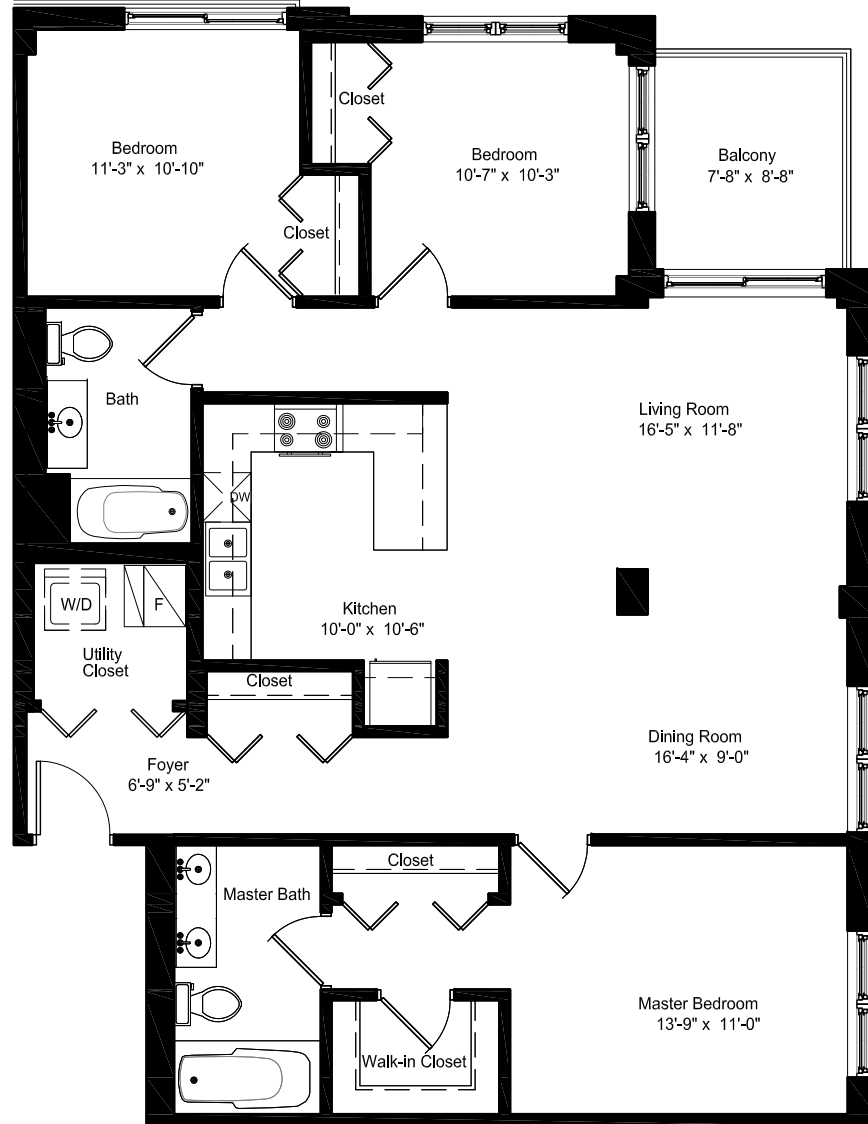


KEY PLAN (5A)
N.T.S.



RELATED

Marketing Center
1200 W. Roosevelt Rd.
Chicago, IL 60608
312.836.1200



Unit 412 has been designated to be "Adaptable" per the Illinois Accessibility Code. This unit has features allowing the design to be modified to provide accessibility for persons with disabilities, if requested by purchaser.

Unit 412 is designated as "Hearing Impaired Adaptable" per applicable codes. This unit has empty conduit and blank cover plates for future visual alarms.



Franklin

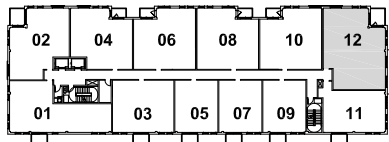
1255 & 1355 West Roosevelt Road
Elevator Residence
212, 312, 412

Three Bedrooms
Two Baths
1,428 Square Feet

NOTE:
THIS DRAWING IS FURNISHED FOR INFORMATIONAL
PURPOSES ONLY. DIMENSION AND FIELD
CONDITIONS MAY VARY AND ARE SUBJECT TO
CHANGE WITHOUT NOTICE. 10/06.

LIVING AREA CEILING HEIGHTS ARE NOMINALLY
9'-0".

LOCATION AND SIZES OF CABINETS, APPLIANCES
AND FIXTURES ARE APPROXIMATE AND MAY VARY.

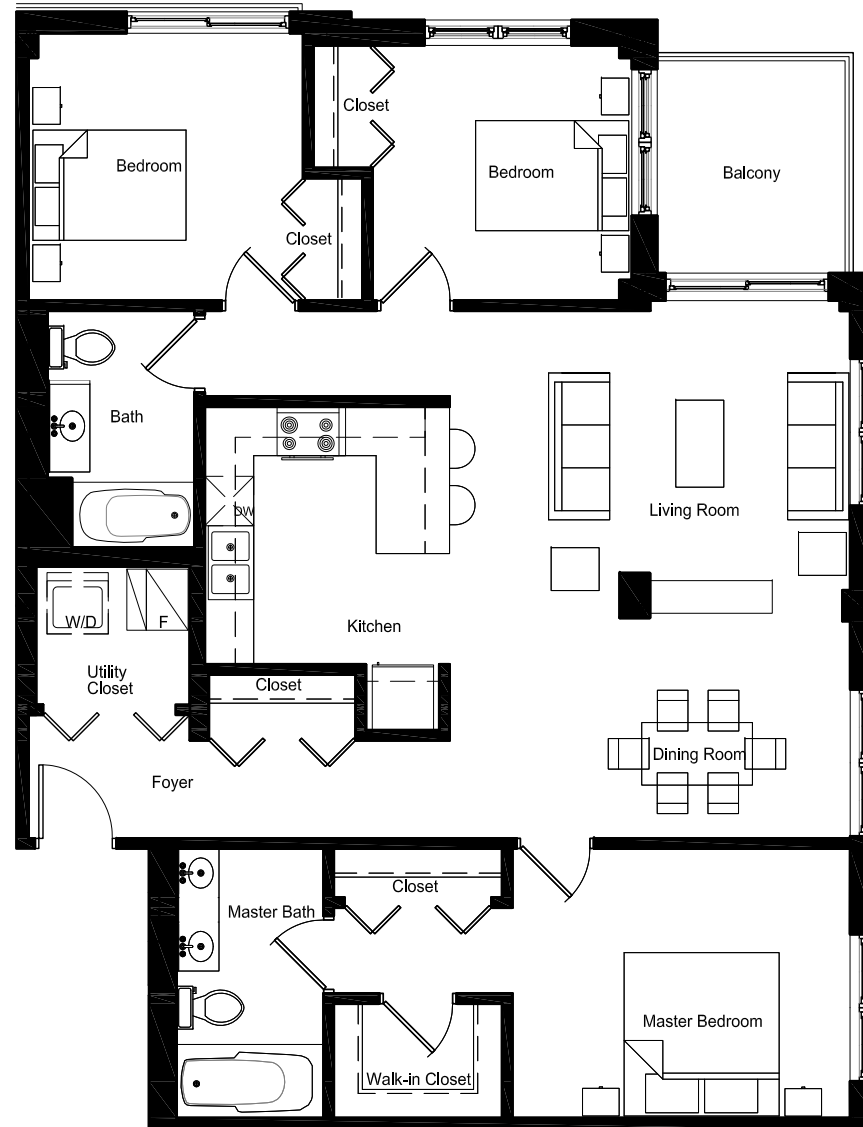


KEY PLAN (5A)
N.T.S.



RELATED

Marketing Center
1200 W. Roosevelt Rd.
Chicago, IL 60608
312.836.1200



Unit 412 has been designated to be "Adaptable" per the Illinois Accessibility Code. This unit has features allowing the design to be modified to provide accessibility for persons with disabilities, if requested by purchaser.

Unit 412 is designated as "Hearing Impaired Adaptable" per applicable codes. This unit has empty conduit and blank cover plates for future visual alarms.

Furniture Plan

